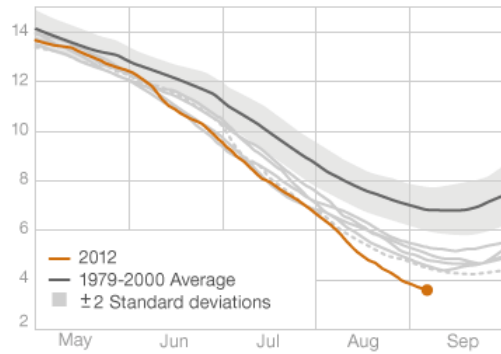
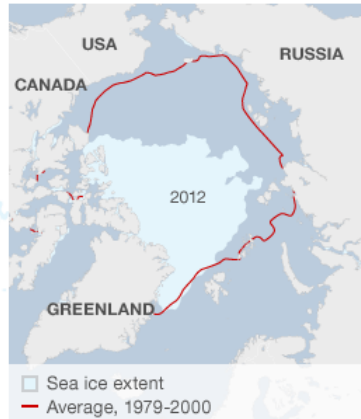


The Arctic summer melt, 2007-2012

Sea ice extent, millions of kilometres squared



Source: National Snow and Ice Data Center, Boulder, Colorado



2012 Ice Coverage Compared with the Historical Average (BBC News):

“As a scientist, I know that this is unprecedented in at least as much as 1,500 years. It is truly amazing - it is a huge dramatic change in the system.” (Dr. Edmond Hansen)